



# 2023



## AYRSHIRE YOUNG AND PROVEN SIRE CATALOGUE

**SEMAYR**  
Breeding Services

Serious about improving  
the Ayrshire breed

## WELCOME TO THE 2023 SEMAYR BREEDING SERVICES BROCHURE

SEMAYR – Serious about improving the Ayrshire breed.

This year genomics have been used as an aid within our selection of the young bulls. After an initial selection of 15 bulls we then were able to reduce them down to seven with the aid of genomics. The base used is that of the NZ dairy animal and as this is what we are comparing to, it makes sense to use this as our base.

In the team of six proven NZ based bulls we have three new graduates. This means that three of the team from last year have been moved to the 'also available' list if there is still semen available.

We are actively trying to keep a spread of genetics within the bulls offered while maintaining a high standard within our breed. Semayr also offers three bulls from Scandanavia, two the same as last years catalogue and the third bull Vioma P who carries the polled gene.

We believe that the standards set and used within Semayr are continuing improve the Ayrshire Breed in New Zealand

### IMPORTANT INFORMATION (Progeny Test Bulls)

- Free registration for all progeny sired by Semayr Progeny Test Bulls (2022 bulls sired 2023 born calves = free registration.)
- Free classification for all your two year olds, if at least 20% are sired by Semayr Progeny Test bulls
- Not available until spring mating. All orders subject to availability. If semen cannot be provided, LIC will contact you to arrange a replacement.
- Minimum 3 bulls and 20 straws in a Pak (equal quantities of each)

**\$15.20**  
+GST

**CHOICE PAK**  
per straw

**\$6.60**  
+GST

**NO CHOICE PAK**  
per straw

**\$16.60**  
+GST

**INDIVIDUALLY NOMINATED**  
per straw

**ALL SEMEN MAY BE ORDERED THROUGH ALPHA® OR YOUR LIC AGRI MANAGER**

ALPHA® is a registered trade mark of Livestock Improvement Corporation Ltd

### AYRSHIRE SIRE PROVING SCHEME

Help prove the Ayrshire bulls of the future - Join the Ayrshire Sire Proving Scheme

- **Semen available at \$3.00 per straw + GST**
- **No limit on animal numbers**
- **Free pedigree registration on all Semayr SPS sired heifers**
- **Free classification of all Ayrshire two year olds**

Put up your whole herd, an age group or a selected line for the Sire Proving Scheme.

Get a head start on the latest Ayrshire genetics, and help the breed prove the Ayrshire bulls of the future.

Contact the Ayrshire office on 07 856 0816 or e-mail [info@ayrshire.org.nz](mailto:info@ayrshire.org.nz) for more information.



Date: 30/04/2022

**Ayrshire New Zealand**

P O Box 1132, Hamilton 3240

t: 07 856 0816 e: [info@ayrshire.org.nz](mailto:info@ayrshire.org.nz)

[www.ayrshire.org.nz](http://www.ayrshire.org.nz)

Semayr Breeding Services is the marketing division of Ayrshire New Zealand

ALPHA® is a registered trade mark of Livestock Improvement Corporation Ltd

gBW  
93

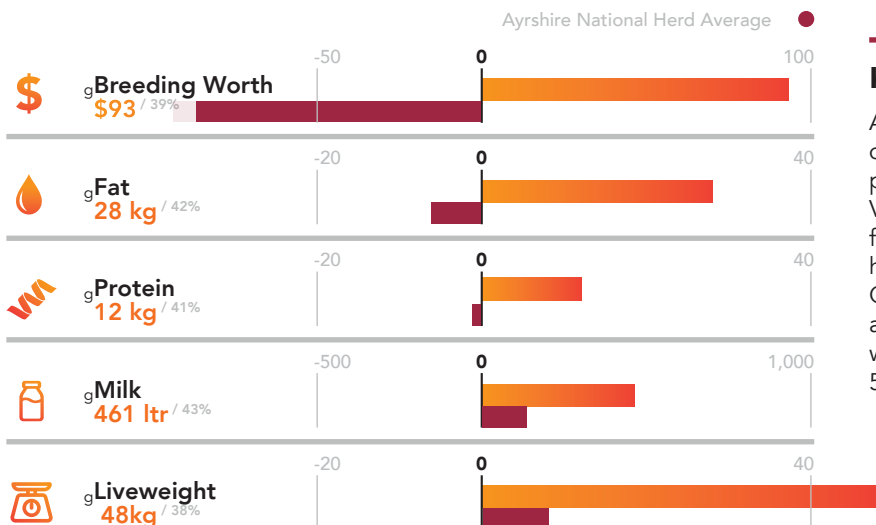
REL: 39%

# KITEROA LAS VEGASS

AB CODE: 523500

A2A2

SIRE: VR Vimo  
DAM: Kiteroa Linnies Lady, V8-8



LIC® Data Source  
20/03/2023

## Kiteroa Las Vegass

A Vimo son, Vimo himself has over 2000 daughters in his proof and excels in his proof with high type and production. Las Vegass' dam descends from the Bonny Lusta family at Kiteroa. High type, high PW and high production throughout this pedigree. Genomics has this young sire transmitting a 4.9% fat test and 3.7% protein test along with an udder BV of +.63. Dam produced 586kg MS at 3 years.

UNPROVEN BULL

P001.50 Official Publication of Livestock Improvement Corporation Limited and the NZ Ayrshire Association. Internal Animal Key = 44557159

### Three Generation Pedigree

AYRSHIRE

NEW ZEALAND

NZ Ayrshire Association

New Zealand

AE

Herd Averages as at

Ancestry :

BW :

PW :

TPPT / HERDCODE :

LOCATION :

DATE : 20/03/2023

REGISTERED AYRSHIRE

G3

S✓D✓

KITEROA LAS VEGASS

Oseas HB No: 000000523500/NZL (523500)

Sex : MALE

Breed : PA A16

Date of Birth : 20/08/2022

Genomic Indicator: 93/39

Protein BV (kg): 12/41

Fat BV (kg): 28/42

Milk BV (ltr): 461/43

Liveweight BV (kg): 48/38

Fertility BV (%): -10.3/29

Functional Survival BV (%): 2.3/14

Somatic Cell BV: -0.64/11

Overall Opinion BV: 0.55/21

Udder Overall BV: 0.63/38

Dairy Conformation BV: 0.42/26

Fat %: 4.9

Protein %: 3.7

VR STAKKEHAVE VILJAR VIMO

Oseas HB No: 00000038094/DNK (521703)

Breed : A A1501

Genomic Indicator: G3

BW (\$): 8/60

Protein BV (kg): 4/65

Fat BV (kg): 11/68

Milk BV (ltr): 202/66

Liveweight BV (kg): 49/34

Fertility BV (%): -7.6/57

Functional Survival BV (%): 0.6/25

Somatic Cell BV: -0.92/72

Fat %: 4.8

Protein %: 3.7

KITEROA LYNNIES LADY

Birth Ident: MVV-18-3

Breed: PA A16

Genomic Indicator: G3

BW (\$): 69/59

Protein BV (kg): 14/62

Fat BV (kg): 23/62

Milk BV (ltr): 691/65

SCC BV: -0.26/60

Age (yr)

Protein (ltr)

Milkfat (%)

Days

LW

4 yr 1 m 6373 3.32 212 3.93 250 205 260

3 yr 0 m 7576 3.46 262 4.28 324 301 347

2 yr 0 m 6055 3.51 212 4.30 260 296 124

Avg 6668 3.43 229 4.17 278 267 3 Lacts.

VR KUUSELAN VIMUR VILJAR

Oseas HB No: 00000047674/FIN (518720)

Breed: PA A16

Genomic Indicator: G3

BW (\$): -37/86

Protein BV (kg): 1/92

Fat BV (kg): -8/93

Milk BV (ltr): 44/94

Lwt BV (kg): 62/61

Fertility BV (%): -1.5/82

Func Surv BV (%): 2.0/45

SCC BV: -1.31/92

Age (yr)

Milk (ltr)

Protein (%)

Milkfat (%)

Days

LW

13 yr 5 m 2053 3.32 68 4.06 83 62 37

12 yr 4 m 7063 3.55 251 4.22 298 303 24

11 yr 4 m 6725 3.63 244 4.22 284 249 72

10 yr 3 m 7119 3.45 246 4.42 315 305 T 136

9 yr 3 m 6152 3.58 220 4.49 276 277 T 121

Plus 6 unprinted lactations

Avg 7252 3.59 260 4.44 322 286 10 Lacts.

STAKKEHAVE ROCKSTAR

Oseas HB No: 001652203030/DNK

Breed: A A1402

Genomic Indicator: G3

BW (\$): 20/98

Protein BV (kg): 22/99

Fat BV (kg): 21/99

Milk BV (ltr): 688/99

Lwt BV (kg): 25/95

Fertility BV (%): -13.6/98

Func Surv BV (%): 1.3/74

SCC BV: 0.17/99

Age (yr)

Milk (ltr)

Protein (%)

Milkfat (%)

Days

LW

10 Lacts, Protein Milkfat

Milk (%) (kg) (%) (kg) Days

8506 3.73 317 4.21 358 285

KAMOURASKA ROCKSTAR

Oseas HB No: 00010437733/CAN (515343)

Breed: PA A16

Genomic Indicator: BW (\$): -198/88

RDCDNKFO01652202590

Oseas HB No: 001652202590/DNK

Breed: AO A1204

Genomic Indicator: BW (\$): -98/81

Protein (%)

Milkfat (%)

Days

PW (\$): 351/92

SANROSA DEACON ET

Birth Ident: BNNL-12-17 (513521)

Breed: PA A16

Genomic Indicator: G3

BW (\$): 20/98

Protein BV (kg): 22/99

Fat BV (kg): 21/99

Milk BV (ltr): 688/99

Lwt BV (kg): 25/95

Fertility BV (%): -13.6/98

Func Surv BV (%): 1.3/74

SCC BV: 0.17/99

Age (yr)

Milk (ltr)

Protein (%)

Milkfat (%)

Days

LW

10 Lacts, Protein Milkfat

Milk (%) (kg) (%) (kg) Days

8506 3.73 317 4.21 358 285

MELLORA LYNDIA ET

Birth Ident: FMWT-08-4

Breed: PA A16

Genomic Indicator: G3

BW (\$): 66/67

Protein BV (kg): 14/62

Fat BV (kg): 23/62

Milk BV (ltr): 691/65

SCC BV: -0.26/60

Age (yr)

Milk (ltr)

Protein (%)

Milkfat (%)

Days

LW

13 yr 5 m 2053 3.32 68 4.06 83 62 37

12 yr 4 m 7063 3.55 251 4.22 298 303 24

11 yr 4 m 6725 3.63 244 4.22 284 249 72

10 yr 3 m 7119 3.45 246 4.42 315 305 T 136

9 yr 3 m 6152 3.58 220 4.49 276 277 T 121

Plus 6 unprinted lactations

Avg 7252 3.59 260 4.44 322 286 10 Lacts.

SAINT MACCO

8 W C PA R 1 L US PU RU FT RT TL UO DC

0 0 0 0 7 7 7 4 7 7 8 7 8 5 8 4 8 8

The information on this report is as recorded on the LIC MINDA database as at date of print, and LIC does not warrant the accuracy of the information provided



<sup>g</sup>BW  
16

REL: 41%

# LODORE ROYAL VIMO

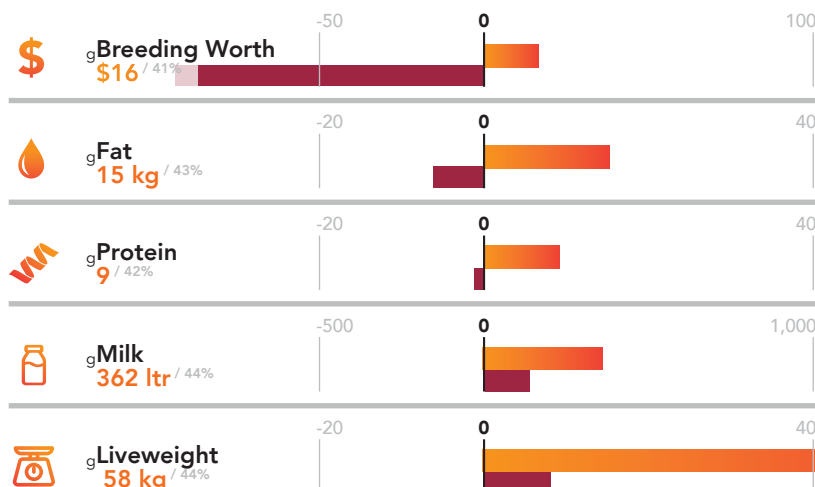
AB CODE: 523501

A2A2

SIRE: VR Vimo  
DAM: Lodore Karis Royal, V7-8



Ayrshire National Herd Average



**LIC** Data Source  
20/03/2023

## Lodore Royal Vimo

The second Vimo son with the female line from the Royal family at Lodore. A very constant line with high type throughout. Genomics has Royal Vimo transmitting a 4.7% fat test and a 3.7% protein test and an udder overall BV of +.43. Dam produced 616 kg MS at 4 years.

UNPROVEN BULL



gBW  
0

REL: 42%

# MUSICA BLUEGRASS

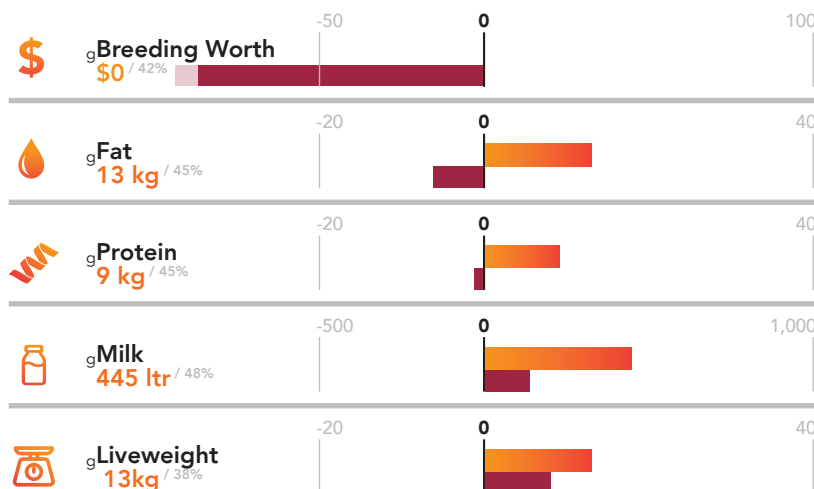
AB CODE: 523502

A2A2

SIRE: Musica Tromboner  
DAM: Musica 14-14, B7-7



Ayrshire National Herd Average



LIC® Data Source  
20/03/2023

## Musica Bluegrass

Sired by the newly proven bull Musica Tromboner who is leaving high producing daughters with good type. The female line has some different sires represented with the direct dam being sired by Lodore Blake. Genomics has Bluegrass as transmitting a 4.6% fat test and a 3.6% protein test and with an overall udder score of +.35. Dam produced 688kg MS at 7 years.

UNPROVEN BULL

<sup>g</sup>BW  
**-45**  
REL: 41%

# SANROSA DOUGY

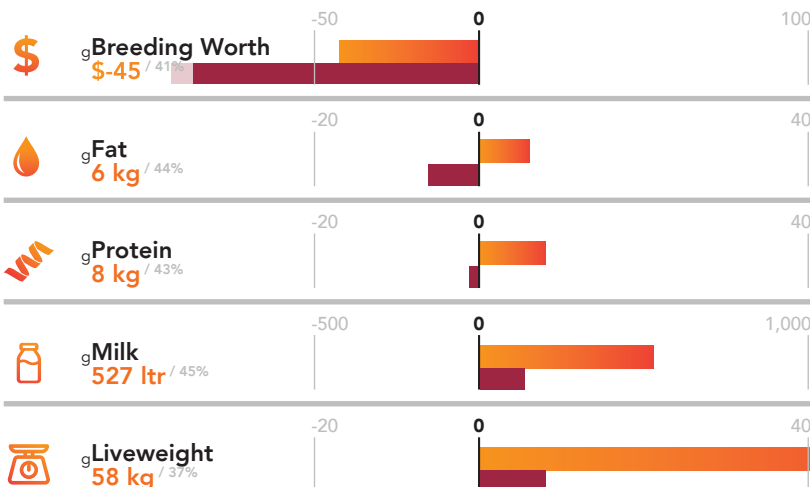
AB CODE: 523503

A2A2

SIRE: VR Vimo  
DAM: Sanrosa Dale 12-29 ET, V7-8



Ayrshire National Herd Average



**LIC** Data Source  
20/03/2023

## Sanrosa Dougy

Another Vimo son this time from a high producing Tosikko daughter in Dale 12-29 ET who features in the breeds top 10 PW cows, with a PW of 472. Genomics has Dougy transmitting a massive +.67 for rump width (a feature of this family) and our highest on Udder Overall at +.78. Dam produced 804kg MS at 4 years (most of her lactations done at Goldwyn).

**UNPROVEN BULL**

<







**gBW**  
**20**  
**REL: 40%**

# THORNTON PARK V BERRETTA

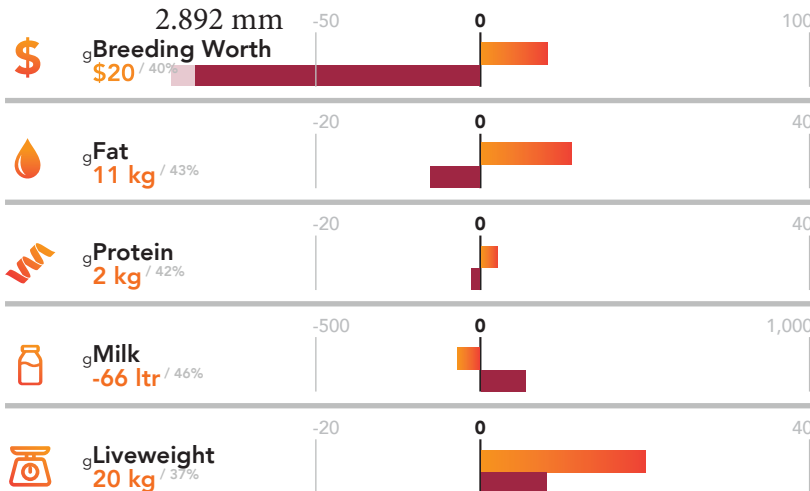
AB CODE: 523506

A1A2

SIRE: VR Vimo  
DAM: Thornton Park SPG Beretta, V7-8



Ayrshire National Herd Average



**LIC** Data Source  
20/03/2023

## Thornton Park V Berretta

The fourth Vimo son and from a Bonny George daughter in turn from a Challenge cow. This female line at Thornton Park has proven itself with excellent production and type through the generations. Again this bull is expected to transmit a 5.1% fat test and a 3.9% protein test, and with an overall udder of +.59. Dam produced 611kg MS at 9 years.

**UNPROVEN BULL**

P001.50 Official Publication of Livestock Improvement Corporation Limited and the NZ Ayrshire Association. Internal Animal Key = 44731045

### Three Generation Pedigree

NZ Ayrshire Association  
New Zealand

Herd Averages as at  
Ancestry : BW : PW :

PTPT / HERDCODE :  
LOCATION :  
DATE : 20/03/2023

**REGISTERED AYRSHIRE**

**THORNTON PARK V BERRETTA**

Oseas HB No: 00000523506/NZL (523506)

Sex: MALE

Breed: PA A16

Date of Birth: 10/08/2022

Genomic Indicator:

BW (\$): 20/40

Protein BV (kg): 2/42

Fat BV (kg): 11/43

Milk BV (ltr): -66/46

Liveweight BV (kg): 20/37

Fertility BV (%): -7.8/32

Functional Survival BV (%): 0.2/15

Somatic Cell BV: -0.51/42

Overall Opinion BV: 0.58/22

Udder Overall BV: 0.59/37

Dairy Conformation BV: 0.40/27

Fat %: 5.1

Protein %: 3.9

**VR STAKKEHAVE VILJAR VIMO**

Oseas HB No: 00000038094/DNK (521703)

Breed: A A1501

Genomic Indicator:

BW (\$): 8/60

Protein BV (kg): 4/65

Fat BV (kg): 11/68

Milk BV (ltr): 202/66

Liveweight BV (kg): 49/34

Fertility BV (%): -7.6/57

Functional Survival BV (%): 0.6/25

Somatic Cell BV: -0.92/72

Fat %: 4.8

Protein %: 3.7

**THORNTON PARK SPG BERETTA**

Birth Ident: MHTH-12-46

Breed: PA A16

Genomic Indicator:

BW (\$): 320/91

Protein BV (kg): 7/50

Fat BV (kg): 12/66

Milk BV (ltr): 7/67

Liveweight BV (kg): 1.1/35

Fertility BV (%): -8.0/54

Functional Survival BV (%): 1.1/35

Somatic Cell BV: -0.16/61

Overall Opinion BV: 0.58/22

Udder Overall BV: 0.59/37

Dairy Conformation BV: 0.40/27

Fat %: 5.1

Protein %: 3.9

**VR KUUSELAN VIMUR VILJAR**

Oseas HB No: 000000047674/FIN (518720)

Breed: PA A16

Genomic Indicator:

BW (\$): -37/86

Protein BV (kg): 1/92

Fat BV (kg): -8/93

Milk BV (ltr): 44/94

Liveweight BV (kg): 62/61

Fertility BV (%): -1.5/82

Functional Survival BV (%): 2.0/45

Somatic Cell BV: -1.31/92

Overall Opinion BV: 0.58/22

Udder Overall BV: 0.59/37

Dairy Conformation BV: 0.40/27

Fat %: 5.1

Protein %: 3.9

**STAKKEHAVE ROCKSTAR**

Oseas HB No: 001652203030/DNK

Breed: A A1402

Genomic Indicator:

BW (\$): 6/91

Protein BV (kg): 1/99

Fat BV (kg): -1/99

Milk BV (ltr): 375/99

Liveweight BV (kg): 6/91

Fertility BV (%): -12.2/97

Functional Survival BV (%): 1.4/81

Somatic Cell BV: -0.61/98

Overall Opinion BV: 0.58/22

Udder Overall BV: 0.59/37

Dairy Conformation BV: 0.40/27

Fat %: 5.1

Protein %: 3.9

**KAMOURASKA ROCKSTAR**

Oseas HB No: 000104347733/CAN (513543)

Breed: PA A16

Genomic Indicator:

BW (\$): -198/88

Protein BV (kg): 1/99

Fat BV (kg): -1/99

Milk BV (ltr): 375/99

Liveweight BV (kg): 6/91

Fertility BV (%): -12.2/97

Functional Survival BV (%): 1.4/81

Somatic Cell BV: -0.61/98

Overall Opinion BV: 0.58/22

Udder Overall BV: 0.59/37

Dairy Conformation BV: 0.40/27

Fat %: 5.1

Protein %: 3.9

**RIDCONKFO01652202590**

Oseas HB No: 001652202590/DNK

Breed: AO A1204

Genomic Indicator:

BW (\$): 6/91

Protein BV (kg): 1/99

Fat BV (kg): -1/99

Milk BV (ltr): 375/99

Liveweight BV (kg): 6/91

Fertility BV (%): -12.2/97

Functional Survival BV (%): 1.4/81

Somatic Cell BV: -0.61/98

Overall Opinion BV: 0.58/22

Udder Overall BV: 0.59/37

Dairy Conformation BV: 0.40/27

Fat %: 5.1

Protein %: 3.9

**GOLDWYN FOLLY SULTAN**

Birth Ident: DVLX-98-35 (61772)

Breed: PA A16

Genomic Indicator:

BW (\$): -91/99

Protein BV (kg): 1/99

Fat BV (kg): -1/99

Milk BV (ltr): 375/99

Liveweight BV (kg): 6/91

Fertility BV (%): -12.2/97

Functional Survival BV (%): 1.4/81

Somatic Cell BV: -0.61/98

Overall Opinion BV: 0.58/22

Udder Overall BV: 0.59/37

Dairy Conformation BV: 0.40/27

Fat %: 5.1

Protein %: 3.9

**KILFENNAN CHALLENGE**

Birth Ident: DVLX-98-35 (61772)

Breed: PA A16

Genomic Indicator:

BW (\$): -91/99

Protein BV (kg): 1/99

Fat BV (kg): -1/99

Milk BV (ltr): 375/99

Liveweight BV (kg): 6/91

Fertility BV (%): -12.2/97

Functional Survival BV (%): 1.4/81

Somatic Cell BV: -0.61/98

Overall Opinion BV: 0.58/22

Udder Overall BV: 0.59/37

Dairy Conformation BV: 0.40/27

Fat %: 5.1

Protein %: 3.9

**WAITUI CHALLS BERRETTA**

Birth Ident: DFDY-04-8

Breed: PA A16

Genomic Indicator:

BW (\$): -98/59

Protein BV (kg): 1/99

Fat BV (kg): -1/99

Milk BV (ltr): 375/99

Liveweight BV (kg): 6/91

Fertility BV (%): -12.2/97

Functional Survival BV (%): 1.4/81

Somatic Cell BV: -0.61/98

Overall Opinion BV: 0.58/22

Udder Overall BV: 0.59/37

Dairy Conformation BV: 0.40/27

Fat %: 5.1

Protein %: 3.9

**SALT SPRAY BONNY GEORGE**

Birth Ident: DYNX-04-46 (505545)

Breed: PA A16

Genomic Indicator:

BW (\$): -53/97

Protein BV (kg): 6/99

Fat BV (kg): -1/99

Milk BV (ltr): 375/99

Liveweight BV (kg): 6/91

Fertility BV (%): -12.2/97

Functional Survival BV (%): 1.4/81

Somatic Cell BV: -0.61/98

Overall Opinion BV: 0.58/22

Udder Overall BV: 0.59/37

Dairy Conformation BV: 0.40/27

Fat %: 5.1

Protein %: 3.9

**WAITUI RAMBO BERNETTA S3A**

Birth Ident: DFDY-93-14

Breed: SA A15X1

Genomic Indicator:

BW (\$): -106/61

Protein BV (kg): 1/99

Fat BV (kg): -1/99

Milk BV (ltr): 375/99

Liveweight BV (kg): 6/91

Fertility BV (%): -12.2/97

Functional Survival BV (%): 1.4/81

Somatic Cell BV: -0.61/98

Overall Opinion BV: 0.58/22

Udder Overall BV: 0.59/37

Dairy Conformation BV: 0.40/27

Fat %: 5.1

Protein %: 3.9

**TRAIT OTHER THAN PRODUCTION (2017)**

| Age       | Milk (ltr) | Protein (%) | Fat (%) | Milkfat (%) | Days | LW  |
|-----------|------------|-------------|---------|-------------|------|-----|
| 9 yr 11 m | 3740       | 3.67        | 137     | 4.18        | 156  | 223 |
| 8 yr 8 m  | 7190       | 3.70        | 266     | 4.80        | 345  | 343 |
| 7 yr 8 m  | 5526       | 3.70        | 204     | 4.87        | 269  | 217 |
| 6 yr 7 m  | 6728       | 3.96        | 267     | 4.70        | 316  | 305 |
| 5 yr 0 m  | 6542       | 3.85        | 252     | 4.73        | 310  | 271 |
| 4 yr 0 m  | 5563       | 4.06        | 226     | 4.83        | 269  | 262 |
| 3 yr 0 m  | 5505       | 4.12        | 227     | 5.19        | 285  | 275 |
| 1 yr 11 m | 5630       | 4.05        | 228     | 5.08        | 286  | 284 |
| Avg       | 5803       | 3.89        | 226     | 4.82        | 280  | 261 |

The information on this report is as recorded on the LIC MINDA database as at date of print, and LIC does not warrant the accuracy of the information provided

N = Induced T = At least 1 Abnormal Test in this Lactation  
D = Lactation details include at least one derived test

GeneMark DNA Profiled # = Percentage Uncertain  
g Indices evaluated by LIC using genomic information

D / S ✓ = Percentage Confirmed by DNA

P001.50



## GET SOME RED IN YOUR SHED



*Ayrshire New Zealand Will Develop, Promote & Maintain the Ayrshire Breed as a Credible Option for New Zealand Dairy Farmers.*

*Genetic Gain Of The Ayrshire Population*

*Vibrant Membership Proud to Belong*



[www.ayrshire.org.nz](http://www.ayrshire.org.nz)



# SEMAYR

Breeding Services

Introduce the...

# Proven Sires

ALL SEMEN MUST BE ORDERED THROUGH YOUR  
LIC AGRI MANAGER

**\$23.15**  
+GST

**INDIVIDUALLY NOMINATED**  
per straw

**\$21.40**  
+GST

**AYRSHIRE PAKS FROM**  
per straw

**PRICE UNLESS SPECIFIED**

## NATIONAL AYRSHIRE AVERAGES

These statistics are calculated by LIC. Production and TOP information includes all current cows in the national herd (ie. Animals signed up for herd testing with 80 or more numbered cows current in the herd aged over 490 days), whereas the calving difficulty BV, which is a sire trait, is based on all enrolled bulls, with a BW reliability of at least 60%, at least 20 herd tested daughters and at least one two-year old daughter milking in the last 5 years

### TRAITS OTHER THAN PRODUCTION

|                         |       |
|-------------------------|-------|
| Adaptability to Milking | 0.19  |
| Shed Temperament        | 0.20  |
| Milking Speed           | -0.03 |
| Overall Opinion         | 0.17  |
| Stature                 | -0.08 |
| Capacity                | 0.30  |
| Rump Angle              | 0.30  |
| Rump Width              | -0.10 |
| Legs                    | 0.02  |
| Udder Support           | 0.12  |
| Front Udder             | 0.14  |
| Rear Udder              | -0.04 |
| Front Teat Placement    | 0.12  |
| Rear Teat Placement     | 0.12  |
| Teat Length             | -0.27 |
| Udder Overall           | 0.11  |
| Dairy Conformation      | 0.15  |

### PRODUCTION BVs

|                        |       |
|------------------------|-------|
| Breeding Worth (\$)    | -94   |
| Protein (Kg)           | 0.3   |
| Milkfat (Kg)           | -4.4  |
| Milk Volume (Litres)   | 155   |
| Liveweight (Kg)        | 18.5  |
| Fertility (%)          | -8    |
| Somatic Cell (Score)   | -0.18 |
| Functional Survival    | -0.02 |
| Body Condition (Score) | -0.02 |

### SIRE BREED AVERAGE

|                               |      |
|-------------------------------|------|
| Heifer Calving Difficulty (%) | -0.2 |
| Cow Calving Difficulty (%)    | -0.3 |



17/02/2023

# IWA SUPER SONIC

AB CODE: 515503

BW

151

REL: 92%

A2A2

SIRE: Salt Spray Bonny George  
DAM: Sanrosa Snowie 11-260 ET, V6-7



Iwa Super Sonic daughter

## Iwa Super Sonic

Super Sonic remains our highest BW bull now with 359 daughters in his proof giving him a reliability of 91%. Leaving average size daughters and with 117 daughters in his TOP proof his udder overall of +.72 is very desirable.

### TOP Breeding Values

DAUGHTERS: 359   HERDS: 82

### Breeding Values

| MANAGEMENT              |       |             | -1 | -0.5 | 0 | 0.5 | 1         |
|-------------------------|-------|-------------|----|------|---|-----|-----------|
| Adaptability to Milking | 0.03  | SLOWLY      |    |      |   |     | QUICKLY   |
| Shed Temperament        | 0.04  | NERVOUS     |    |      |   |     | PLACID    |
| Milking Speed           | -0.20 | SLOW        |    |      |   |     | FAST      |
| Overall Farmer Opinion  | 0.06  | UNDESIRABLE |    |      |   |     | DESIRABLE |
| CONFORMATION            |       |             | -1 | -0.5 | 0 | 0.5 | 1         |
| Stature                 | 0.04  | SMALL       |    |      |   |     | TALL      |
| Dairy Capacity          | -0.11 | FRAIL       |    |      |   |     | CAPACIOUS |
| Rump Angle              | 0.05  | HIGH PINS   |    |      |   |     | SLOPING   |
| Rump Width              | -0.04 | NARROW      |    |      |   |     | WIDE      |
| Legs                    | -0.10 | STRAIGHT    |    |      |   |     | CURVED    |
| Udder Support           | 0.58  | WEAK        |    |      |   |     | STRONG    |
| Front Udder             | 0.68  | LOOSE       |    |      |   |     | STRONG    |
| Rear Udder              | 0.63  | LOW         |    |      |   |     | HIGH      |
| Front Teat              | 0.20  | WIDE        |    |      |   |     | CLOSE     |
| Rear Teat               | 0.42  | WIDE        |    |      |   |     | CLOSE     |
| Teat Length             | -0.30 | SHORT       |    |      |   |     | LONG      |
| Udder Overall           | 0.67  | UNDESIRABLE |    |      |   |     | DESIRABLE |
| Dairy Conformation      | 0.36  | UNDESIRABLE |    |      |   |     | DESIRABLE |

|                      |            |
|----------------------|------------|
| Protein BV (kg)      | 15         |
| Fat (kg)             | 28         |
| Milk (ltr)           | 497        |
| Liveweight (kg)      | 11         |
| Somatic Cell         | -0.48      |
| Functional Survival  | 1          |
| Fertility            | -7.7       |
| Protein %            | 3.7        |
| Fat %                | 4.8        |
| Body Condition Score | -0.08      |
| Evaluation Date      | 18/03/2023 |

# IWA ISO CASTLEBAR ET

AB CODE: 516504

BW

61

REL: 83%

**A2A2**

SIRE: Southwind Isabro  
DAM: Sanrosa Snowie 11-260 ET, V6-7



Iwa Iso Castlebar ET daughter

## Iwa Iso Castlebar ET

Castlebar leads our bulls on production. Daughters are capacious and work well under our NZ farming system.

## TOP Breeding Values

DAUGHTERS: 79 HERDS: 19

## Breeding Values

| MANAGEMENT              |       |             | -1 | -0.5 | 0 | 0.5 | 1         |
|-------------------------|-------|-------------|----|------|---|-----|-----------|
| Adaptability to Milking | 0.27  | SLOWLY      |    |      |   |     | QUICKLY   |
| Shed Temperament        | 0.30  | NERVOUS     |    |      |   |     | PLACID    |
| Milking Speed           | -0.31 | SLOW        |    |      |   |     | FAST      |
| Overall Farmer Opinion  | 0.19  | UNDESIRABLE |    |      |   |     | DESIRABLE |
| CONFORMATION            |       |             | -1 | -0.5 | 0 | 0.5 | 1         |
| Stature                 | 0.19  | SMALL       |    |      |   |     | TALL      |
| Dairy Capacity          | 0.47  | FRAIL       |    |      |   |     | CAPACIOUS |
| Rump Angle              | 0.47  | HIGH PINS   |    |      |   |     | SLOPING   |
| Rump Width              | -0.12 | NARROW      |    |      |   |     | WIDE      |
| Legs                    | 0.04  | STRAIGHT    |    |      |   |     | CURVED    |
| Udder Support           | -0.21 | WEAK        |    |      |   |     | STRONG    |
| Front Udder             | -0.16 | LOOSE       |    |      |   |     | STRONG    |
| Rear Udder              | -0.18 | LOW         |    |      |   |     | HIGH      |
| Front Teat              | 0.008 | WIDE        |    |      |   |     | CLOSE     |
| Rear Teat               | -0.14 | WIDE        |    |      |   |     | CLOSE     |
| Teat Length             | -0.57 | SHORT       |    |      |   |     | LONG      |
| Udder Overall           | -0.17 | UNDESIRABLE |    |      |   |     | DESIRABLE |
| Dairy Conformation      | 0.15  | UNDESIRABLE |    |      |   |     | DESIRABLE |

|                      |            |
|----------------------|------------|
| Protein BV (kg)      | 25         |
| Fat (kg)             | 28         |
| Milk (ltr)           | 944        |
| Liveweight (kg)      | 67         |
| Somatic Cell         | -0.06      |
| Functional Survival  | -1         |
| Fertility            | -4.4       |
| Protein %            | 3.6        |
| Fat %                | 4.4        |
| Body Condition Score | 0.09       |
| Evaluation Date      | 18/03/2023 |



18/03/2023



# KAURI STERLING

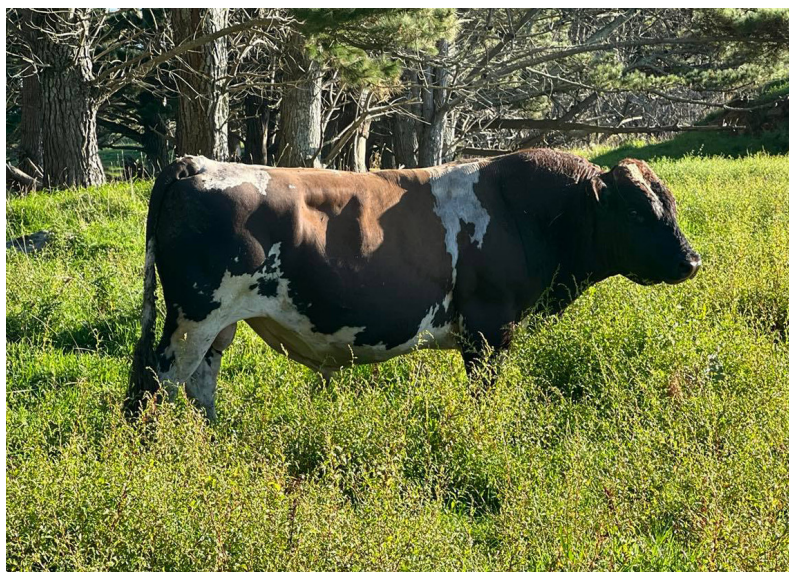
AB CODE: 518501

BW  
**42**

REL: 78%

**A1A2**

SIRE: Southwind Jacks Quintin  
DAM: Lodore Carters Snow ET, V6-7



Kauri Sterling

## Kauri Sterling

Sterling leaves average size daughters and is transmitting a 5.1% fat test and a 3.8% protein test. With his calving difficulty figure Sterling would be suitable for yearling matings.

## TOP Breeding Values

DAUGHTERS: 62 HERDS: 19

## Breeding Values

| MANAGEMENT              |       |             | -1 | -0.5 | 0 | 0.5 | 1         |
|-------------------------|-------|-------------|----|------|---|-----|-----------|
| Adaptability to Milking | 0.40  | SLOWLY      |    |      |   |     | QUICKLY   |
| Shed Temperament        | 0.41  | NERVOUS     |    |      |   |     | PLACID    |
| Milking Speed           | 0.03  | SLOW        |    |      |   |     | FAST      |
| Overall Farmer Opinion  | 0.40  | UNDESIRABLE |    |      |   |     | DESIRABLE |
| CONFORMATION            |       |             | -1 | -0.5 | 0 | 0.5 | 1         |
| Stature                 | -0.33 | SMALL       |    |      |   |     | TALL      |
| Dairy Capacity          | 0.44  | FRAIL       |    |      |   |     | CAPACIOUS |
| Rump Angle              | 0.13  | HIGH PINS   |    |      |   |     | SLOPING   |
| Rump Width              | -0.24 | NARROW      |    |      |   |     | WIDE      |
| Legs                    | 0.10  | STRAIGHT    |    |      |   |     | CURVED    |
| Udder Support           | 0.21  | WEAK        |    |      |   |     | STRONG    |
| Front Udder             | 0.33  | LOOSE       |    |      |   |     | STRONG    |
| Rear Udder              | 0.13  | LOW         |    |      |   |     | HIGH      |
| Front Teat              | 0.27  | WIDE        |    |      |   |     | CLOSE     |
| Rear Teat               | 0.35  | WIDE        |    |      |   |     | CLOSE     |
| Teat Length             | -0.25 | SHORT       |    |      |   |     | LONG      |
| Udder Overall           | 0.29  | UNDESIRABLE |    |      |   |     | DESIRABLE |
| Dairy Conformation      | 0.35  | UNDESIRABLE |    |      |   |     | DESIRABLE |

|                      |            |
|----------------------|------------|
| Protein BV (kg)      | 12         |
| Fat (kg)             | 25         |
| Milk (ltr)           | 298        |
| Liveweight (kg)      | 37         |
| Somatic Cell         | 0.43       |
| Functional Survival  | 1          |
| Fertility            | -9.3       |
| Protein %            | 3.8        |
| Fat %                | 5          |
| Body Condition Score | -0.14      |
| Evaluation Date      | 18/03/2023 |



18/03/2023

# BROOKVIEW D EXTREME

AB CODE: 519500

BW  
**68**

REL: 64%

**A1A2**

SIRE: Sanrosa Deacon ET  
DAM: Brookview Lots Elsie, Exc



Brookview D Extreme

## Brookview D Extreme

D Extreme is just proven this year and is a Deacon son from a Trident Lot daughter. The dam is average in size with good all-round type. Extreme daughters are well balanced with sound udders, and production to go with it.



Brookview D Extreme Daughter

**NEWLY PROVEN BULL**

## TOP Breeding Values

DAUGHTERS: 23 HERDS: 9

## Breeding Values

| MANAGEMENT              |       |             | -1 | -0.5 | 0 | 0.5 | 1         |
|-------------------------|-------|-------------|----|------|---|-----|-----------|
| Adaptability to Milking | 0.48  | SLOWLY      |    |      |   |     | QUICKLY   |
| Shed Temperament        | 0.51  | NERVOUS     |    |      |   |     | PLACID    |
| Milking Speed           | -0.01 | SLOW        |    |      |   |     | FAST      |
| Overall Farmer Opinion  | 0.38  | UNDESIRABLE |    |      |   |     | DESIRABLE |
| CONFORMATION            |       |             | -1 | -0.5 | 0 | 0.5 | 1         |
| Stature                 | -0.15 | SMALL       |    |      |   |     | TALL      |
| Dairy Capacity          | 0.12  | FRAIL       |    |      |   |     | CAPACIOUS |
| Rump Angle              | 0.001 | HIGH PINS   |    |      |   |     | SLOPING   |
| Rump Width              | 0.04  | NARROW      |    |      |   |     | WIDE      |
| Legs                    | -0.12 | STRAIGHT    |    |      |   |     | CURVED    |
| Udder Support           | 0.39  | WEAK        |    |      |   |     | STRONG    |
| Front Udder             | 0.12  | LOOSE       |    |      |   |     | STRONG    |
| Rear Udder              | 0.17  | LOW         |    |      |   |     | HIGH      |
| Front Teat              | -0.03 | WIDE        |    |      |   |     | CLOSE     |
| Rear Teat               | 0.40  | WIDE        |    |      |   |     | CLOSE     |
| Teat Length             | -0.82 | SHORT       |    |      |   |     | LONG      |
| Udder Overall           | 0.20  | UNDESIRABLE |    |      |   |     | DESIRABLE |
| Dairy Conformation      | 0.15  | UNDESIRABLE |    |      |   |     | DESIRABLE |

|                      |            |
|----------------------|------------|
| Protein BV (kg)      | 23         |
| Fat (kg)             | 23         |
| Milk (ltr)           | 757        |
| Liveweight (kg)      | 25         |
| Somatic Cell         | -0.55      |
| Functional Survival  | 1          |
| Fertility            | -14.3      |
| Protein %            | 3.7        |
| Fat %                | 4.5        |
| Body Condition Score | -0.13      |
| Evaluation Date      | 18/03/2023 |



30/04/2022

# MUSICA TROMBONER

AB CODE: 519512

BW  
**53**  
REL: 63%

**A1A2**

SIRE: Sanrosa Dynamite ET  
DAM: Musica 13-25, V7-8



Musica Tromboner

## Musica Tromboner

Tromboner is leaving very capacious daughters, sound udders and good production with excellent farmer traits. His daughters have continued to produce well as the season has progressed.

## NEWLY PROVEN BULL

### TOP Breeding Values

DAUGHTERS: 29 HERDS: 11

### Breeding Values

#### MANAGEMENT

| MANAGEMENT              |      |             | -1 | -0.5 | 0 | 0.5         | 1         |
|-------------------------|------|-------------|----|------|---|-------------|-----------|
| Adaptability to Milking | 0.53 | SLOWLY      |    |      |   | <div></div> | QUICKLY   |
| Shed Temperament        | 0.54 | NERVOUS     |    |      |   | <div></div> | PLACID    |
| Milking Speed           | 0.24 | SLOW        |    |      |   | <div></div> | FAST      |
| Overall Farmer Opinion  | 0.54 | UNDESIRABLE |    |      |   | <div></div> | DESIRABLE |

#### CONFORMATION

| CONFORMATION       |       |             | -1 | -0.5 | 0 | 0.5 | 1         |
|--------------------|-------|-------------|----|------|---|-----|-----------|
| Stature            | 0.03  | SMALL       |    |      |   |     | TALL      |
| Dairy Capacity     | 0.66  | FRAIL       |    |      |   |     | CAPACIOUS |
| Rump Angle         | 0.40  | HIGH PINS   |    |      |   |     | SLOPING   |
| Rump Width         | 0.21  | NARROW      |    |      |   |     | WIDE      |
| Legs               | 0.13  | STRAIGHT    |    |      |   |     | CURVED    |
| Udder Support      | 0.30  | WEAK        |    |      |   |     | STRONG    |
| Front Udder        | 0.47  | LOOSE       |    |      |   |     | STRONG    |
| Rear Udder         | 0.06  | LOW         |    |      |   |     | HIGH      |
| Front Teat         | 0.09  | WIDE        |    |      |   |     | CLOSE     |
| Rear Teat          | 0.12  | WIDE        |    |      |   |     | CLOSE     |
| Teat Length        | -1.00 | SHORT       |    |      |   |     | LONG      |
| Udder Overall      | 0.28  | UNDESIRABLE |    |      |   |     | DESIRABLE |
| Dairy Conformation | 0.40  | UNDESIRABLE |    |      |   |     | DESIRABLE |

|                      |            |
|----------------------|------------|
| Protein BV (kg)      | 20         |
| Fat (kg)             | 23         |
| Milk (ltr)           | 602        |
| Liveweight (kg)      | 44         |
| Somatic Cell         | 0.42       |
| Functional Survival  | 1          |
| Fertility            | -7.4       |
| Protein %            | 3.7        |
| Fat %                | 4.6        |
| Body Condition Score | -0.04      |
| Evaluation Date      | 18/03/2023 |



18/03/2023



# LODORE RULER

AB CODE: 519509

BW  
**65**

REL: 63%

**A1A2**

SIRE: Greenlane Toledo  
DAM: Lodore Karis Royal, V7-8



Lodore Ruler

## Lodore Ruler

Leaving daughters smaller than average, which would make him an excellent choice for yearling matings. High farmer traits as well. The higher fertility index is a feature of this sire as well.

## NEWLY PROVEN BULL

### TOP Breeding Values

DAUGHTERS: 18 HERDS: 10

### Breeding Values

#### MANAGEMENT

|                         |      | -1          | -0.5 | 0 | 0.5 | 1 |           |
|-------------------------|------|-------------|------|---|-----|---|-----------|
| Adaptability to Milking | 0.44 | SLOWLY      |      |   |     |   | QUICKLY   |
| Shed Temperament        | 0.45 | NERVOUS     |      |   |     |   | PLACID    |
| Milking Speed           | 0.07 | SLOW        |      |   |     |   | FAST      |
| Overall Farmer Opinion  | 0.36 | UNDESIRABLE |      |   |     |   | DESIRABLE |

#### CONFORMATION

|                    |       | -1          | -0.5 | 0 | 0.5 | 1 |           |
|--------------------|-------|-------------|------|---|-----|---|-----------|
| Stature            | -0.54 | SMALL       |      |   |     |   | TALL      |
| Dairy Capacity     | 0.19  | FRAIL       |      |   |     |   | CAPACIOUS |
| Rump Angle         | 0.49  | HIGH PINS   |      |   |     |   | SLOPING   |
| Rump Width         | -0.50 | NARROW      |      |   |     |   | WIDE      |
| Legs               | 0.14  | STRAIGHT    |      |   |     |   | CURVED    |
| Udder Support      | -0.11 | WEAK        |      |   |     |   | STRONG    |
| Front Udder        | -0.10 | LOOSE       |      |   |     |   | STRONG    |
| Rear Udder         | -0.21 | LOW         |      |   |     |   | HIGH      |
| Front Teat         | 0.02  | WIDE        |      |   |     |   | CLOSE     |
| Rear Teat          | -0.03 | WIDE        |      |   |     |   | CLOSE     |
| Teat Length        | -0.08 | SHORT       |      |   |     |   | LONG      |
| Udder Overall      | -0.13 | UNDESIRABLE |      |   |     |   | DESIRABLE |
| Dairy Conformation | -0.11 | UNDESIRABLE |      |   |     |   | DESIRABLE |

|                      |            |
|----------------------|------------|
| Protein BV (kg)      | 9          |
| Fat (kg)             | 16         |
| Milk (ltr)           | 244        |
| Liveweight (kg)      | 25         |
| Somatic Cell         | -0.58      |
| Functional Survival  | 0          |
| Fertility            | -3.2       |
| Protein %            | 3.8        |
| Fat %                | 4.8        |
| Body Condition Score | -0.07      |
| Evaluation Date      | 18/03/2023 |



18/03/2023

# ALSO AVAILABLE PROVEN BULLS

Thornton Park Pets Express leaving excellent udders at +.86 and overall Dairy Conformation of +.75 and excellent farmer traits, and the second bull Iwa Dynasty leaving functional udders and good production.

## THORNTON PARK PETS EXPRES

AB CODE: 518511

**A2A2**

SIRE: Goldwyn Pets Rumba ET  
DAM: Waitui Brods KC, V6-9



Thornton Park Pets Express

### TOP Breeding Values

DAUGHTERS: 71 HERDS: 25

| MANAGEMENT             |      | -1          | -0.5 | 0 | 0.5 | 1         |
|------------------------|------|-------------|------|---|-----|-----------|
| Overall Farmer Opinion | 0.67 | UNDESIRABLE |      |   |     | DESIRABLE |
| CONFORMATION           |      | -1          | -0.5 | 0 | 0.5 | 1         |
| Udder Overall          | 0.79 | UNDESIRABLE |      |   |     | DESIRABLE |
| Dairy Conformation     | 0.69 | UNDESIRABLE |      |   |     | DESIRABLE |



### Breeding Values

|                      |            |
|----------------------|------------|
| Protein BV (kg)      | 6          |
| Fat (kg)             | 11         |
| Milk (ltr)           | 468        |
| Liveweight (kg)      | 55         |
| Somatic Cell         | 0.15       |
| Functional Survival  | -1         |
| Fertility            | -11.4      |
| Protein %            | 3.6        |
| Fat %                | 4.5        |
| Body Condition Score | -0.1       |
| Evaluation Date      | 18/03/2023 |



18/03/2023

## IWA DYNASTY

AB CODE: 518509

**A2A2**

SIRE: Sanrosa Dynamo  
DAM: Iwa Snowie 13-260, V7-8



Iwa Dynasty

### TOP Breeding Values

DAUGHTERS: 70 HERDS: 24

| MANAGEMENT             |       | -1          | -0.5 | 0 | 0.5 | 1         |
|------------------------|-------|-------------|------|---|-----|-----------|
| Overall Farmer Opinion | 0.22  | UNDESIRABLE |      |   |     | DESIRABLE |
| CONFORMATION           |       | -1          | -0.5 | 0 | 0.5 | 1         |
| Udder Overall          | -0.05 | UNDESIRABLE |      |   |     | DESIRABLE |
| Dairy Conformation     | 0.17  | UNDESIRABLE |      |   |     | DESIRABLE |



### Breeding Values

|                      |            |
|----------------------|------------|
| Protein BV (kg)      | 14         |
| Fat (kg)             | 23         |
| Milk (ltr)           | 439        |
| Liveweight (kg)      | 21         |
| Somatic Cell         | -0.24      |
| Functional Survival  | 1          |
| Fertility            | -13.6      |
| Protein %            | 3.7        |
| Fat %                | 4.8        |
| Body Condition Score | -0.15      |
| Evaluation Date      | 18/03/2023 |



18/03/2023

# UNDERSTANDING NZ INFORMATION

An extract from the LIC Genetics Catalogue to help explain the components of a Sire Catalogue

## Name

\$ **135/81** % REL



### gBW/Rel

Using this bull at a gBW of \$135 indicates that per 5t DM the replacements are expected to generate NZD \$67.50 more net profit than using a sire with a gBW of 0.

The reliability of a sire is a measure of the amount of information behind the bulls gBW. The higher the reliability the less movement expected with his gBW.

### Protein and Milkfat

A gBV of 23 kg indicates that the bull will produce daughters which on average, are genetically superior to the base cow by 11 kg per 5t dry matter consumed.

### Fertility

A gBV of -3.4% indicates that -1.7% more daughters are expected to calve in the first 42 days of a herds calving period, compared to a bull of 0.

As an industry New Zealand has a tighter calving pattern than dairy industries worldwide. Highly fertile cows have been necessary to achieve this. It is generally accepted that the New Zealand base cow is far more fertile than any other countries base.

### Functional Survival

The likely percentage of cows surviving to the next lactation independent of culling for low production or poor fertility (For example a bull with a gBV of 0% means, on average, we expect his daughters to have a 0% higher probability of surviving to the next lactation than a bull with a gBV of 0)

### Shed Temperament

A gBV of 0.00 indicates that the bull will produce daughters which on average, are genetically the same as the base cow. (For example by using a bull with a shed temperament of 0.24 the raw score for his daughters on average is expected to be  $6.28 + 0.12 = 6.4$  from a linear score of 9).

## Production gBVs

59 Daughters 30 Herds

| Production Efficiency     |                        |                      |                     |               |
|---------------------------|------------------------|----------------------|---------------------|---------------|
| Milkfat                   | Protein                | Milk Volume          | Liveweight          |               |
| 23 kg                     | 11 kg                  | 352                  | 21 kg               |               |
| 4.9 %                     | 3.7 %                  |                      |                     |               |
| Robustness                |                        |                      |                     |               |
| Fertility                 | Somatic Cell Count     | Body Condition Score | Functional Survival | Udder Overall |
| -3.4 %                    | -0.63                  | -0.01                | 0%                  | 0.66          |
| Other                     |                        |                      |                     |               |
| Heifer Calving Difficulty | Cow Calving Difficulty | Gestation Length     |                     |               |
| -2.1%/69%                 | 0.4%/91%               | -1.3 days            |                     |               |

### Liveweight

A gBV of 21 kg indicates by using this sire over the average cow in New Zealand his daughters are expected to have a mature liveweight 10kg heavier than the base cow of 500 kg. Because Breeding Values (gBV) are calculated across breed you would expect a Holstein Friesian to have a much higher (positive) gBV for liveweight and you would expect Jerseys to have a lower (negative) gBV.

### Milk

A gBV of 352 litres indicates the bull will produce daughters which on average will produce 176 litres more than the base cow per 5t of dry matter fed. Remember the gBV is across breeds so Jersey and Crossbred animals may show a negative gBV.

## TOP Traits

25 Daughters TOP Inspected

| Management           | gBV  | -.5 | 0 | .5 | 1.0 |
|----------------------|------|-----|---|----|-----|
| Adapts to Milking    | .22  |     |   |    |     |
| Shed Temperament     | .24  |     |   |    |     |
| Milking Speed        | -.16 |     |   |    |     |
| Overall Opinion      | .17  |     |   |    |     |
| Conformation         | gBV  | -.5 | 0 | .5 | 1.0 |
| Stature              | -.27 |     |   |    |     |
| Capacity             | .34  |     |   |    |     |
| Rump Angle           | .07  |     |   |    |     |
| Rump Width           | -.14 |     |   |    |     |
| Legs                 | -.09 |     |   |    |     |
| Udder Support        | .60  |     |   |    |     |
| Front Udder          | .63  |     |   |    |     |
| Rear Udder           | .56  |     |   |    |     |
| Front Teat Placement | .24  |     |   |    |     |
| Rear Teat Placement  | .40  |     |   |    |     |
| Teat Length          | -.17 |     |   |    |     |
| Udder Overall        | .66  |     |   |    |     |
| Dairy Conformation   | .32  |     |   |    |     |

### Somatic Cell Count

A useful approximation for farmers to note, is that a difference between two sires of 0.5 in breeding value equates to a difference in expected daughter performance of 35,000 bulk milk count. The lower the SCC gBV the better as you want to reduce the bulk milk SCC.

### Ayrshire NZ Note Regarding Liveweight

Please note that the BV calculation for liveweight no longer contains TOP data, but is calculated solely on ancestry data in the absence of actual weights. This lowers the reliability of Ayrshire bulls considerably.

28/05/2022

## LIC Initiatives

|            |      |            |      |
|------------|------|------------|------|
| VMSW       | 1184 | A2 Protein | A2A2 |
| High Input | 1187 |            |      |

### Stature

Again as the gBV for a sire is comparing his progeny against the base cow which is across breed. Stature for Jerseys is usually negative and Holsteins are positive.

### Calving Difficulty

A sires Calving Difficulty gBV compares the percentage of assisted calvings expected when he is mated to yearling heifers and cows, compared to a bull of 0.

gBW/gBV are calculated by LIC





# Scandinavian Medley

Try the best from Scandinavia

## VR Vimo

## 521703

Born: 12-12-2017

## A2A2



VR Vimo = VR Viljar x Rockstar x Fastrup

**SIRE: VR VILJAR**  
FIN47674

**DAM: Stakkehave Rockstar Frosty**  
DNK1652203030

Now proven with 2,284 daughters in his production proof leaving good milk with high kg of fat. His fertility index continues to rise with his increasing daughter numbers, as does his udder health index. Vimo's milkability and temperament index also continues to rise. Couple all this with his excellent conformation traits including udder traits makes this sire an excellent choice to use.

**ALSO A LIMITED AMOUNT OF SEXED SEMEN AVAILABLE AT**  
**\$49.00 +GST**

**\$22.00 +GST**  
Despatch fee \$30 per order

**ORDERS to**  
**AYRSHIRE NZ**  
info@ayrshire.org.nz  
07 856 0816

### Production Traits

Daughters: 2,284

| Reliability 99% | 80  | 100 | 120 |
|-----------------|-----|-----|-----|
| Prod. Index     | 114 |     |     |
| Milk, kg        | 100 |     |     |
| Protein, kg     | 105 |     |     |
| Protein %       | 109 |     |     |
| Fat, kg         | 119 |     |     |
| Fat %           | 123 |     |     |
| Growth          | 100 |     |     |

### Functional Traits

Daughters: 896

| Reliability 98% | 80  | 100 | 120 |
|-----------------|-----|-----|-----|
| Milkability     | 99  |     |     |
| Temperament     | 107 |     |     |

### Health & Reproduction Traits

Daughters: 1,930

| Reliability 97%     | 80  | 100 | 120 |
|---------------------|-----|-----|-----|
| Daughter fertility  | 108 |     |     |
| Calving sire        | 100 |     |     |
| Calving maternal    | 106 |     |     |
| Udder health        | 111 |     |     |
| General health      | 109 |     |     |
| Longevity           | 107 |     |     |
| Hoof health         | 95  |     |     |
| Youngstock survival | 113 |     |     |

### Conformation Traits

Daughters: 896

| Reliability 98%       | 80  | 100         | 120           |
|-----------------------|-----|-------------|---------------|
| <b>Frame</b>          | 122 |             |               |
| Stature               | 113 | low         | high          |
| Dairy form            | 106 | coarse      | angular       |
| Chest width           | 118 | narrow      | wide          |
| Body depth            | 116 | shallow     | deep          |
| Rump width            | 112 | narrow pins | wide pins     |
| Rump angle            | 91  | high pins   | low pins      |
| Top line              | 97  | weak        | strong        |
| <b>Feet and legs</b>  | 102 |             |               |
| Rear legs, side view  | 95  | straight    | sickled       |
| Rear legs, rear view  | 97  | toes out    | parallel      |
| Foot angle            | 117 | low         | steep         |
| Bone quality          | 94  | coarse      | fine and thin |
| Hock quality          | 100 | filled      | dry           |
| <b>Udder Overall</b>  | 121 |             |               |
| Fore udder attachment | 112 | loose       | strong        |
| Rear udder height     | 108 | low         | high          |
| Rear udder width      | 103 | narrow      | wide          |
| Udder Suport          | 113 | weak        | strong        |
| Udder depth           | 116 | deep        | shallow       |
| Udder balance         | 130 | low rear    | strong front  |
| Teat length           | 117 | short       | long          |
| Teat thickness        | 113 | thin        | thick         |
| Front teat placement  | 102 | wide        | close         |
| Rear teat placement   | 99  | wide        | close         |

NAV Proof run date 7/03/2023



# Scandinavian Medley

Try the best from Scandinavia

**VR Vesty**

**522507**

Born: 05-12-2019

**A2A2**



**VR Vesty = VR Vimo x VR Froberg x VR Crone**

A genomic tested son of Vimo. Number 1 in the breed for production. Good conformation including the udder. Excels in KG's Fat. Please note that Vesty's daughters are eligible for S2A registration status.

**\$22.00** <sup>+GST</sup>

Despatch fee \$30 per order

**ORDERS to  
AYRSHIRE NZ**

info@ayrshire.org.nz  
07 856 0816

**SIRE: VR VIMO**  
DNK38094

**DAM: DNK000004102904544**

## Production Traits

| Reliability 81% |     | 80 | 100 | 120 |
|-----------------|-----|----|-----|-----|
| Prod. Index     | 126 |    |     |     |
| Milk, kg        | 109 |    |     |     |
| Protein, kg     | 119 |    |     |     |
| Protein %       | 114 |    |     |     |
| Fat, kg         | 127 |    |     |     |
| Fat %           | 121 |    |     |     |
| Growth          | 101 |    |     |     |

## Functional Traits

| Reliability 56% |     | 80 | 100 | 120 |
|-----------------|-----|----|-----|-----|
| Milkability     | 110 |    |     |     |
| Temperament     | 91  |    |     |     |

## Health & Reproduction Traits

| Reliability 74%     |     | 80 | 100 | 120 |
|---------------------|-----|----|-----|-----|
| Daughter fertility  | 101 |    |     |     |
| Calving sire        | 102 |    |     |     |
| Calving maternal    | 108 |    |     |     |
| Udder health        | 108 |    |     |     |
| General health      | 102 |    |     |     |
| Longevity           | 114 |    |     |     |
| Hoof health         | 103 |    |     |     |
| Youngstock survival | 107 |    |     |     |

## Conformation Traits

| Reliability 56%       |     | 80          | 100 | 120           |
|-----------------------|-----|-------------|-----|---------------|
| <b>Frame</b>          |     |             |     |               |
| Stature               | 116 |             |     |               |
| Dairy form            | 109 | low         |     | high          |
| Chest width           | 107 | coarse      |     | angular       |
| Body depth            | 109 | narrow      |     | wide          |
| Rump width            | 109 | shallow     |     | deep          |
| Rump angle            | 118 | narrow pins |     | wide pins     |
| Top line              | 91  | high pins   |     | low pins      |
| Feet and legs         | 96  | weak        |     | strong        |
| Rear legs, side view  | 105 | straight    |     | sickled       |
| Rear legs, rear view  | 105 | toes out    |     | parallel      |
| Foot angle            | 110 | low         |     | steep         |
| Bone quality          | 99  | coarse      |     | fine and thin |
| Hock quality          | 103 | filled      |     | dry           |
| <b>Udder Overall</b>  |     |             |     |               |
| Fore udder attachment | 110 | loose       |     | strong        |
| Rear udder height     | 103 | low         |     | high          |
| Rear udder width      | 111 | narrow      |     | wide          |
| Udder Support         | 114 | weak        |     | strong        |
| Udder depth           | 106 | deep        |     | shallow       |
| Udder balance         | 105 | low rear    |     | strong front  |
| Teat length           | 115 | short       |     | long          |
| Teat thickness        | 105 | thin        |     | thick         |
| Front teat placement  | 106 | wide        |     | close         |
| Rear teat placement   | 104 | wide        |     | close         |

# Scandinavian Medley

Try the best from Scandinavia

## VR Voima P

### 522410

Born: 11-1-2021

## A2A2



A new sire to our catalogue this year. Voima carries the polled gene, and with excellent genomic indexes for production and type. Expected to leave taller animals with exceptionally wide rump width. Daughters are eligible for full pedigree status.

VR Voima P + VR Vario x VR Heroo P x VR Ultra

**SIRE: VR Vario**  
FIN47674

**DAM: VR Rulli**  
FIN13247030

**\$22.00** <sup>+GST</sup>  
Despatch fee \$30 per order

**ORDERS to**  
**AYRSHIRE NZ**  
info@ayrshire.org.nz  
07 856 0816

### Production Traits

| Reliability 80% | 80  | 100 | 120 |
|-----------------|-----|-----|-----|
| Prod. Index     | 119 |     |     |
| Milk, kg        | 108 |     |     |
| Protein, kg     | 117 |     |     |
| Protein %       | 113 |     |     |
| Fat, kg         | 117 |     |     |
| Fat %           | 110 |     |     |
| Growth          | 99  |     |     |

### Functional Traits

| Reliability 51% | 80  | 100 | 120 |
|-----------------|-----|-----|-----|
| Milkability     | 100 |     |     |
| Temperament     | 106 |     |     |

### Health & Reproduction Traits

| Reliability 73%     | 80  | 100 | 120 |
|---------------------|-----|-----|-----|
| Daughter fertility  | 106 |     |     |
| Calving sire        | 98  |     |     |
| Calving maternal    | 104 |     |     |
| Udder health        | 113 |     |     |
| General health      | 103 |     |     |
| Longevity           | 114 |     |     |
| Hoof health         | 96  |     |     |
| Youngstock survival | 97  |     |     |

### Conformation Traits

| Reliability 51%       | 80  | 100         | 120           |
|-----------------------|-----|-------------|---------------|
| <b>Frame</b>          | 123 |             |               |
| Stature               | 122 | low         | high          |
| Dairy form            | 99  | coarse      | angular       |
| Chest width           | 111 | narrow      | wide          |
| Body depth            | 117 | shallow     | deep          |
| Rump width            | 123 | narrow pins | wide pins     |
| Rump angle            | 112 | high pins   | low pins      |
| Top line              | 108 | weak        | strong        |
| <b>Feet and legs</b>  | 93  |             |               |
| Rear legs, side view  | 106 | straight    | sickled       |
| Rear legs, rear view  | 105 | toes out    | parallel      |
| Foot angle            | 104 | low         | steep         |
| Bone quality          | 89  | coarse      | fine and thin |
| Hock quality          | 91  | filled      | dry           |
| <b>Udder Overall</b>  | 112 |             |               |
| Fore udder attachment | 104 | loose       | strong        |
| Rear udder height     | 97  | low         | high          |
| Rear udder width      | 107 | narrow      | wide          |
| Udder Suport          | 107 | weak        | strong        |
| Udder depth           | 113 | deep        | shallow       |
| Udder balance         | 105 | low rear    | strong front  |
| Teat length           | 111 | short       | long          |
| Teat thickness        | 100 | thin        | thick         |
| Front teat placement  | 105 | wide        | close         |
| Rear teat placement   | 95  | wide        | close         |

NAV Proof run date 7/03/2023



**SEMAYR**  
Breeding Services

# SCANDANAVIAN BULLS

## ORDER FORM

### ORDER DETAILS

Farm Name:

.....

Name:

.....

Address:

.....

.....

.....

Postcode:

.....

Phone:

.....

Despatch to:

.....

Bank Location:

.....

Email:

.....

PTPT Code:

.....

AB Starting Date:

.....

Technician: ☐ DIY ☐ CRV ☐ LIC

| SEMEN CODE | NAME | PRICE (excl GST) | NUMBER OF STRAWS REQUIRED |
|------------|------|------------------|---------------------------|
|------------|------|------------------|---------------------------|

|        |                 |         |  |
|--------|-----------------|---------|--|
| 521703 | VR Vimo         | \$22.00 |  |
| 521703 | VR Vimo - Sexed | \$49.00 |  |
| 523507 | VR Vesty        | \$22.00 |  |
| 522410 | VR Voima        | \$22.00 |  |

All prices quoted are per straw  
All orders will incur a despatch fee of \$30.00 + GST

Please complete your details above and mail or email to:  
Ayrshire New Zealand, PO BOX 1132, Hamilton 3240 E: [info@ayrshire.org.nz](mailto:info@ayrshire.org.nz)

**SEMAYR**  
Breeding Services

**"SERIOUS ABOUT  
IMPROVING THE  
AYRSHIRE BREED"**



**Ayrshire New Zealand**  
[www.ayrshire.org.nz](http://www.ayrshire.org.nz)

Physical Address: 290 Tristram St  
Postal Address: PO Box 1132, Hamilton 3240  
+64 7 856 0816